

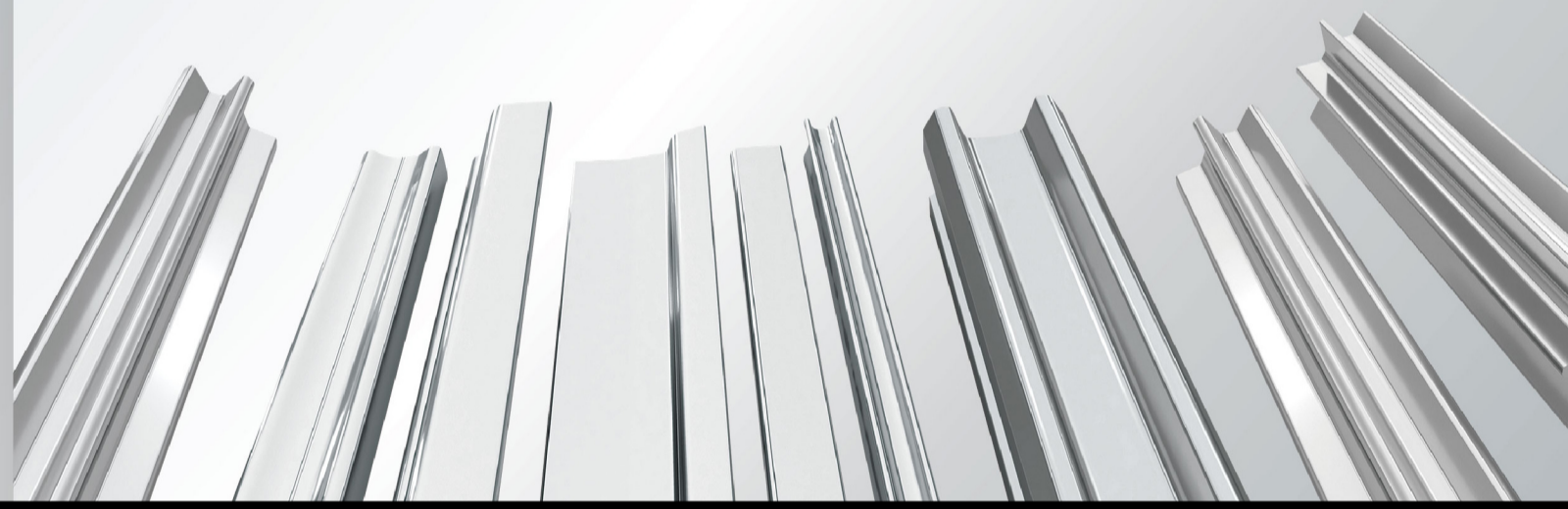


Integrity · Endeavor · Excellence · Innovation

WUXI TIANCHEN COLD-DRAWN STEEL CO., LTD www.wuxitianchen.com Tel: +86-510-83211123 E-mail: dxh2118@163.com



**TIANCHEN**  
COLD-DRAWN STEEL  
无锡天辰冷拉型钢有限公司



## Company Profile

### 公司简介



- **Scope:** production and sales of various cold-drawn (profiled) steel
- **Steel grade:** Carbon steel, Superior carbon steel, Alloy steel, Carbon tool steel, Spring steel, Bearing steel, Stainless steel, Cold heading steel, Free cutting steel, Tool steel, Structural steel, Heat-resistant steel, etc
- **Application fields:** automotive, shipping, military industry, railway engineering, standard parts, precision guide rails, machinery, power equipment, large - scale buildings, chemical equipment, agricultural engineering and other industries.
- **The sales network** has spread all over the country and exported to Europe, the United States, the Middle East, South-east Asia and other overseas markets.
- **范围:** 生产和销售各类冷拉(异)型钢;
- **钢种:** 碳素钢、优碳钢、合金钢、碳钢、弹簧钢、轴承钢、不锈钢、冷镦钢、易切削钢、工具钢、结构钢、耐热钢等;
- **应用领域:** 汽车、船舶、军工、轨道工程、标准件、精密导轨、机械、电力装备、大型建筑、化工设备、农机工程等行业;
- **销售网络:** 已遍布国内地区, 并远销欧洲、美国、中东、东南亚等海外市场。

**¥ 500M+**  
Annual sales  
年销售额

**2000+**  
Varieties  
产品种类

**400+**  
Clients  
中外客户

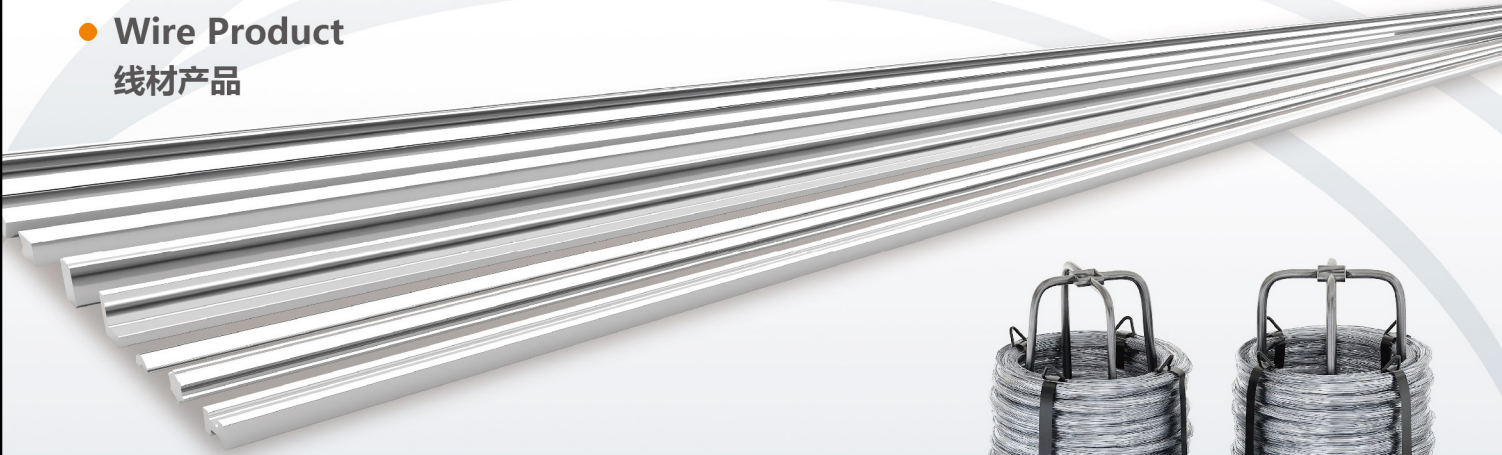
**20+**  
R & D Personnel  
技术研发人员

- IATF16949:2016 《汽车行业质量管理体系》
- ISO9001:2015 《质量管理体系》
- ISO14001:2015 《环境管理体系》
- ISO45001:2018 《职业健康安全管理体系》
- ISO50001:2018 《能源管理体系》
- GB/T213001:2017 《两化融合管理体系认证》



- High precision unmodulated wire
- High precision cold-drawn round steel
- Cold-drawn steel for sliders and linear guide modules
- Linear guide rails for high-end CNC machine tools
- High precision cold-drawn square steel, flat steel and hexagon steel
- Cold-drawn steel for intelligent connected vehicles and new energy vehicles
- Intelligent building steel

● Wire Product  
线材产品



应用领域: 新能源汽车、智能化设备、机器人设备、电动工具、智能家居等行业。  
Application: New energy vehicles, intelligent equipment, robotic systems, power tools, smart homes, and other related industries.



线材产品主要参数

Main Parameters of Linear Steel Products

| 形状 Shape          | 规格 Specifications (mm)  | 粗糙度 Roughness Ra(μm) | 长度 Length (m)      |
|-------------------|---|----------------------|--------------------|
| 圆钢 Round Steel    | φ3-φ25  | ≤1.6                 | Coil, Customizable |
| 方钢 Square Steel   | 4x4 -16x16  | ≤1.6                 | Coil, Customizable |
| 扁钢 Flat Steel     | 3x8-10x20   | ≤1.6                 | Coil, Customizable |
| 六角钢 Hexagon Steel | S6-S18  | ≤1.6                 | Coil, Customizable |
| 备注 Remark         | 可定制异型钢盘条冷拉产品 Customizable Cold-Drawn Profiles / Shaped Steel Wire |                      |                    |

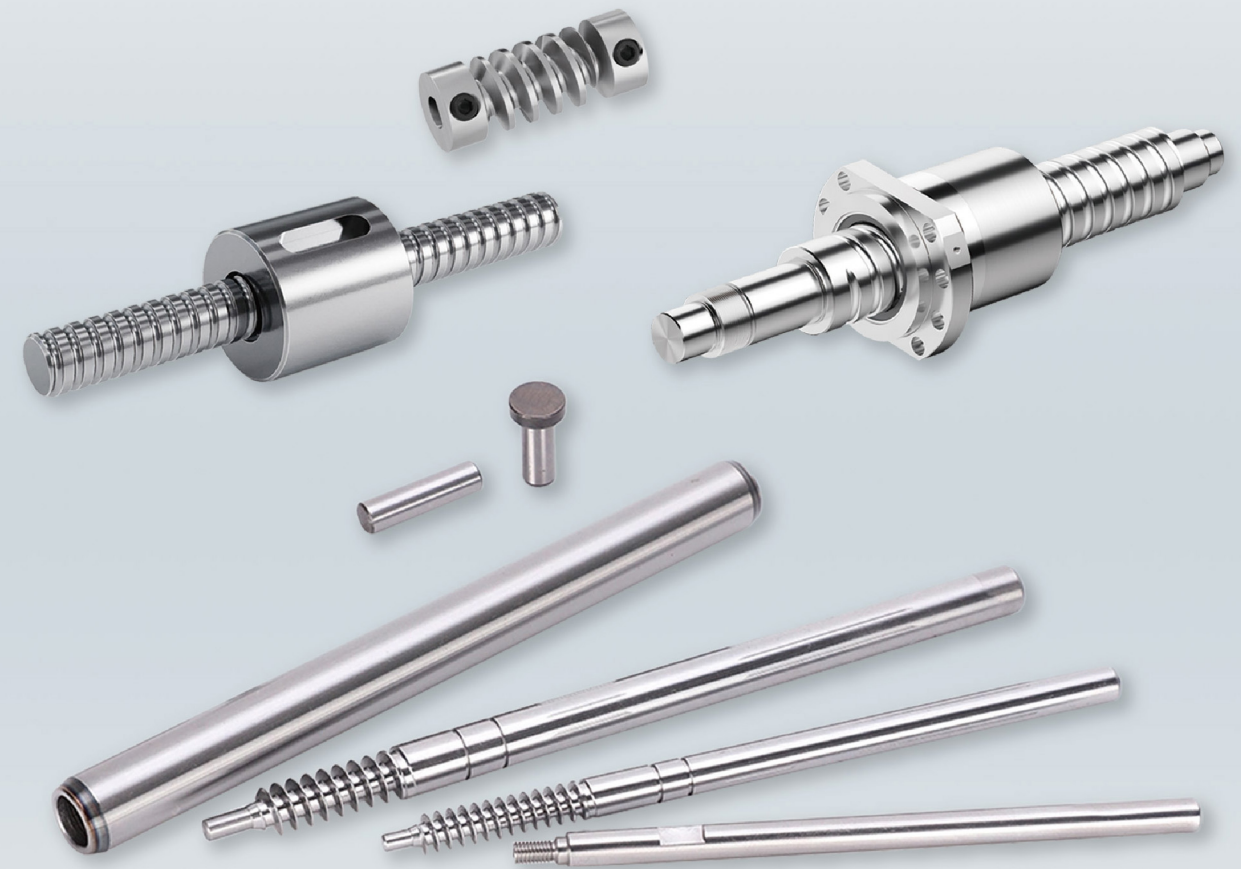
产品精度级别及允许偏差 (mm)

Product Accuracy Grades and Tolerances

| 尺寸 Size (mm) | 8级 / h8  | 9级 / h9  |
|--------------|----------|----------|
| >3-6         | +0-0.018 | 0,-0.030 |
| >6-10        | +0-0.022 | 0,-0.036 |
| >10-18       | +0-0.027 | 0,-0.043 |
| >18-22       | +0-0.033 | 0,-0.052 |

| Type of steel                  | EN  | ASTM  | JIS   | GB   |
|--------------------------------|---|---|---|--|
| Carbon steel / Low alloy steel | S185(1.0035), S235JR(1.0038), E335(1.0060).....   | Grade B, Grade D, Grade 50.....                           | SS330, SS400, SS490.....  | Q195, Q235, Q345.....  |
| Quality carbon steel           | C22(1.0402), C35(1.0501), C45(1.0503).....  | 1020, 1035, 1045, 1022.....                               | S10C, S20C, S35C, S45C  | 20, 35, 45, 20Mn.....  |
| Alloy structure steel          | 33NiCrMo14-5(1.6956), 34CrNiMo6(1.6582), 30CrNiMo8(1.65803), 51CrV4(1.8159), 42CrMo4(1.7225), 16MnCr5(1.7131), 17CrNi6-6(1.5918), 20MnCr55(1.7149)..... | 1524, 1340, 5120, 5140, 4118, 4135, 4140, 3316, 4340..... | SMn420, SMn438, 5Cr420, 5Cr440, 5CrMn420, 5CrMn435, 5CrMn440, 5CrMn415, 5CrMn439..... | 20Mn2, 40Cr, 20CrMo, 35CrMo, 42CrMo, 20CrMnTi, 20Cr2Ni4, 40CrNiMo..... |
| Cold heading steel             | C10C(1.0214), C20C(1.0411), C35EC(1.1172), 34CrMo4(1.7220)  | 1012, 1020, 1030, 1035, 4135, 4140, 1518.....             | SWRCH10A, SWRCH22A, SWARCH35K, SCM435, SWRCHB620.....                                 | ML10AL, ML20, ML30, ML35, ML35CrMo, ML15MnB.....                       |
| Spring steel                   | 61SiCr7(1.7108), 51CrV4(1.8159), 54SiCr6(1.7102).....   | 1566, 9260, 6150.....                                     | SWRH67B, SUP6, SUP7, SUP10.....   | 65Mn, 60Si2Mn, 50CrVA, 55CrSi.....                                     |
| Bearing steel                  | 100Cr6  | E52100  | SUJ2  | GCr15  |
| Stainless steel                | 1.4016, 1.4105, 1.4006, 1.4021, 1.4301.....   | 430, 430F, 412, 420, 304.....                             | SUS430, SUS430F, SUS410, SUS420, SUS304.....  | 1Cr17, Y1Cr17, 1Cr13, 2Cr13, 304.....                                  |
| Tooling steel                  | C80U, C90U, C105U.....  | W1A-8, W1A-81/2, W1A-91/2.....                            | SK80, SK90, SK105.....  | T8, T9, T10.....   |
| Free cutting steel             | 10S20(1.0726), 10SPb20(1.0722), 11SMn30(1.0715), 11SMnPb30(1.0718), 38SMn28(1.0760).....  | 1112, 11L08, 1215, 1213, 12L14, 1141.....                 | SUM21, SUM32, SUM22L, SUM42.....  | Y12, Y12Pb, Y15, Y15Pb, Y40Mn.....                                     |

● Lead Screws & Various Power Transmission Shafts  
丝杆轴及其它各类传动轴产品



应用领域: 新能源汽车、工业机器人、电动工具、智能化设备等领域

Applications: New Energy Vehicles, Industrial Robots, Power Tools, and Intelligent Equipment

● Cold-Drawn Square Steel / Flat Steel / Hexagon Steel  
冷拉方钢 / 冷拉扁钢 / 冷拉六角钢



产品主要参数  
Main Parameters

| 形状 Shape          | 规格 Specifications (mm)  | 粗糙度 Roughness Ra(μm) | 长度 Length (m)         |
|-------------------|---|----------------------|-----------------------|
| 方钢 Square Steel   | 4x4-90x90   | ≤1.6                 | 2.5-8.0, Customizable |
| 扁钢 Flat Steel     | 3x8-10x120  | ≤1.6                 | 2.5-8.0, Customizable |
| 六角钢 Hexagon Steel | S6-S75  | ≤1.6                 | 2.5-8.0, Customizable |
| 备注 Remark         | 精度级别、直线度及其它要求等可根据要求定制<br>Customizable Cold-Drawn Profiles / Shaped Steel Wire |                      |                       |

产品精度级别及允许偏差 (mm)  
Product Accuracy Grades and Tolerances

| 尺寸 Size (mm) | 9级 / h9   | 10级 / h10 | 11级 / h11 |
|--------------|-----------|-----------|-----------|
| >3-6         | 0, -0.030 | 0, -0.048 | 0, -0.075 |
| >6-10        | 0, -0.036 | 0, -0.058 | 0, -0.090 |
| >10-18       | 0, -0.043 | 0, -0.070 | 0, -0.110 |
| >18-30       | 0, -0.052 | 0, -0.084 | 0, -0.130 |
| >30-50       | 0, -0.062 | 0, -0.100 | 0, -0.160 |
| >50-80       | 0, -0.074 | 0, -0.120 | 0, -0.190 |

| Type of steel                  | EN  | ASTM  | JIS  | GB   |
|--------------------------------|---|---|--|--|
| Carbon steel / Low alloy steel | S185(1.0035), S235JR(1.0038), E335(1.0060).....   | Grade B, Grade D, Grade 50.....                           | SS330, SS400, SS490.....   | Q195, Q235, Q345.....  |
| Quality carbon steel           | C22(1.0402), C35(1.0501), C45(1.0503).....  | 1020, 1035, 1045, 1022.....                               | S10C, S20C, S35C, S45C   | 20, 35, 45, 20Mn.....  |
| Alloy structure steel          | 33NiCrMo14-5(1.6956), 34CrNiMo6(1.6582), 30CrNiMo8(1.65803), 51CrV4(1.8159), 42CrMo4(1.7225), 16MnCr5(1.7131), 17CrNi6-6(1.5918), 20MnCrS5(1.7149)..... | 1524, 1340, 5120, 5140, 4118, 4135, 4140, 3316, 4340..... | SMn420, SMn438, SCr420, SCr440, SCM420, SCM435, SCM440, SCN815, SNCM439..... | 20Mn2, 40Cr, 20CrMo, 35CrMo, 42CrMo, 20CrMnTi, 20Cr2Ni4, 40CrNiMo..... |
| Cold heading steel             | C10C(1.0214), C20C(1.0411), C35EC(1.1172), 34CrMo4(1.7220)  | 1012, 1020, 1030, 1035, 4135, 4140, 1518.....             | SWRCH10A, SWRCH22A, SWARCH35K, SCM435, SWRCHB620.....                        | ML10AL, ML20, ML30, ML35, ML35CrMo, ML15MnB.....                       |
| Spring steel                   | 61SiCr7(1.7108), 51CrV4(1.8159), 54SiCr6(1.7102).....   | 1566, 9260, 6150.....                                     | SWRH67B, SUP6, SUP7, SUP10.....  | 65Mn, 60Si2Mn, 50CrVA, 55CrSi.....                                     |
| Bearing steel                  | 100Cr6  | E52100  | SUJ2   | GCr15  |
| Stainless steel                | 1.4016, 1.4105, 1.4006, 1.4021, 1.4301.....   | 430, 430F, 412, 420, 304.....                             | SUS430, SUS430F, SUS410, SUS420, SUS304.....                                 | 1Cr17, Y1Cr17, 1Cr13, 2Cr13, 304.....                                  |
| Tooling steel                  | C80U, C90U, C105U.....  | W1A-8, W1A-81/2, W1A-91/2.....                            | SK80, SK90, SK105.....   | T8, T9, T10.....   |
| Free cutting steel             | 10S20(1.0726), 10SPb20(1.0722), 11SMn30(1.0715), 11SMnPb30(1.0718), 38SMn28(1.0760).....  | 1112, 11L08, 1215, 1213, 12L14, 1141.....                 | SUM21, SUM32, SUM22L, SUM42.....   | Y12, Y12Pb, Y15, Y15Pb, Y40Mn.....                                     |

● High-precision Cold-drawn Round Steel  
高精度冷拉圆钢



产品主要参数  
Main Parameters

| φ3-φ100                 | 研磨 Grinding  | 高精度冷拉 High precision cold drawing | 精度冷拉 Precision cold drawing | 标准冷拉 Standard cold drawin |
|-------------------------|--|-----------------------------------|-----------------------------|---------------------------|
| 精度等级 Precision Grade    | h7级  | Cold drawing                      | h9                          | h9                        |
| 表面粗糙度 Roughness Ra(μm)  | 0.40   | h8级0.80                           | 1.60                        | 1.60                      |
| 交货状态 Delivery Condition | 冷拉、冷拉 + 磨光、调制 + 车削、磨光、车削 + 磨光 + 抛光等<br>Cold Drawn, Cold Drawn + Ground, Q&T + Turned, Ground, Turned + Ground + Polished |                                   |                             |                           |

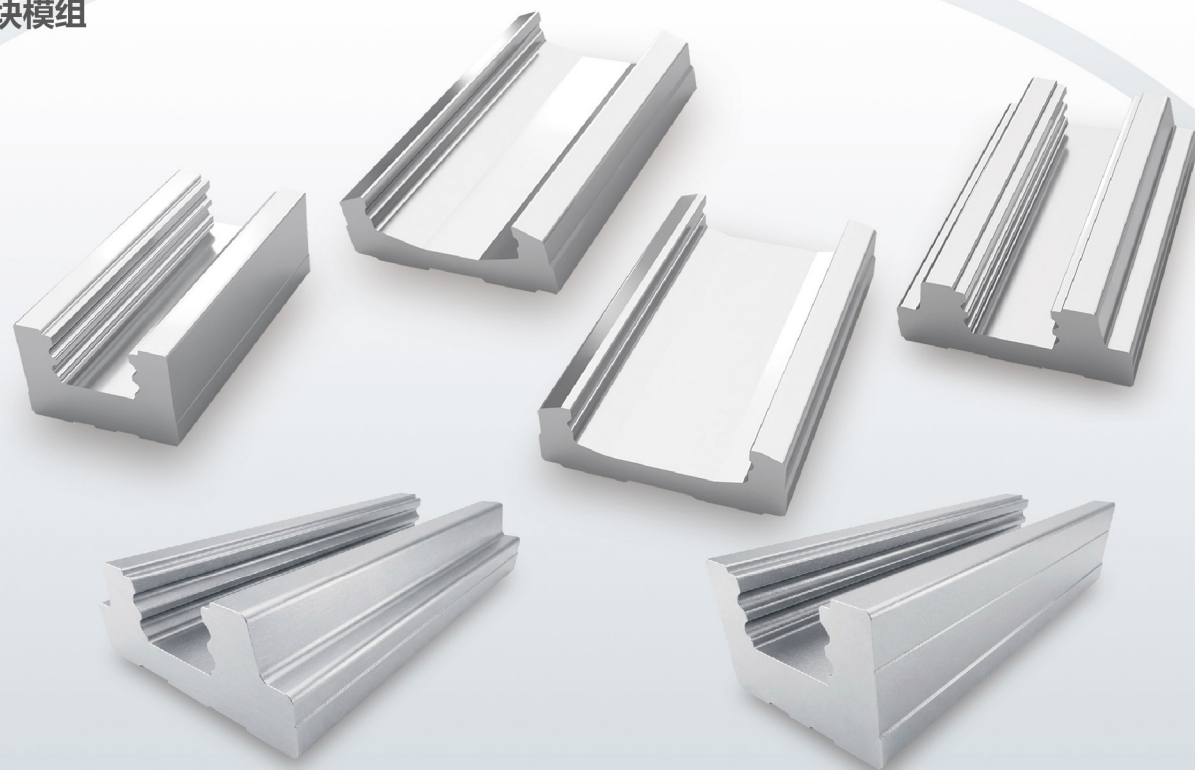
产品精度级别及允许偏差 (mm)  
Product Accuracy Grades and Tolerances

| 尺寸 Size (mm) | 8级 / h8  | 9级 / h9  |
|--------------|----------|----------|
| >3-6         | 0,-0.030 | 0,-0.048 |
| >6-10        | 0,-0.036 | 0,-0.058 |
| >10-18       | 0,-0.043 | 0,-0.070 |
| >18-30       | 0,-0.052 | 0,-0.084 |
| >30-50       | 0,-0.062 | 0,-0.100 |
| >50-80       | 0,-0.074 | 0,-0.120 |

| Type of steel                  | EN  | ASTM  | JIS  | GB   |
|--------------------------------|---|---|--|--|
| Carbon steel / Low alloy steel | S185(1.0035), S235JR(1.0038), E335(1.0060).....   | Grade B, Grade D, Grade 50.....                           | SS330, SS400, SS490.....   | Q195, Q235, Q345.....  |
| Quality carbon steel           | C22(1.0402), C35(1.0501), C45(1.0503).....  | 1020, 1035, 1045, 1022.....                               | S10C, S20C, S35C, S45C   | 20, 35, 45, 20Mn.....  |
| Alloy structure steel          | 33NiCrMo14-5(1.6956), 34CrNiMo6(1.6582), 30CrNiMo8(1.65803), 51CrV4(1.8159), 42CrMo4(1.7225), 16MnCr5(1.7131), 17CrNi6-6(1.5918), 20MnCrS5(1.7149)..... | 1524, 1340, 5120, 5140, 4118, 4135, 4140, 3316, 4340..... | SMn420, SMn438, SCr420, SCr440, SCM420, SCM435, SCM440, SCN815, SNCM439..... | 20Mn2, 40Cr, 20CrMo, 35CrMo, 42CrMo, 20CrMnTi, 20Cr2Ni4, 40CrNiMo..... |
| Cold heading steel             | C10C(1.0214), C20C(1.0411), C35EC(1.1172), 34CrMo4(1.7220)  | 1012, 1020, 1030, 1035, 4135, 4140, 1518.....             | SWRCH10A, SWRCH22A, SWARCH35K, SCM435, SWRCHB620.....                        | ML10AL, ML20, ML30, ML35, ML35CrMo, ML15MnB.....                       |
| Spring steel                   | 61SiCr7(1.7108), 51CrV4(1.8159), 54SiCr6(1.7102).....   | 1566, 9260, 6150.....                                     | SWRH67B, SUP6, SUP7, SUP10.....  | 65Mn, 60Si2Mn, 50CrVA, 55CrSi.....                                     |
| Bearing steel                  | 100Cr6  | E52100  | SUJ2   | GCr15  |
| Stainless steel                | 1.4016, 1.4105, 1.4006, 1.4021, 1.4301.....   | 430, 430F, 412, 420, 304.....                             | SUS430, SUS430F, SUS410, SUS420, SUS304.....                                 | 1Cr17, Y1Cr17, 1Cr13, 2Cr13, 304.....                                  |
| Tooling steel                  | C80U, C90U, C105U.....  | W1A-8, W1A-81/2, W1A-91/2.....                            | SK80, SK90, SK105.....   | T8, T9, T10.....   |
| Free cutting steel             | 10S20(1.0726), 10SPb20(1.0722), 11SMn30(1.0715), 11SMnPb30(1.0718), 38SMn28(1.0760).....  | 1112, 11L08, 1215, 1213, 12L14, 1141.....                 | SUM21, SUM32, SUM22L, SUM42.....   | Y12, Y12Pb, Y15, Y15Pb, Y40Mn.....                                     |

● **Linear Slide Module**

滑块模组



滑块规格: 15型~45型

模组规格: 50型、60型、86型、100型等

应用领域: 数控机床、工艺自动化设备、精密制造等领域。

Specifications:

- Slide/Block Models: Models 15 to 45
- Linear Module Models: Models 50, 60, 86, 100, etc.

Applications: CNC machine tools, industrial automation equipment, precision manufacturing, and other related fields.

**产品主要参数**

**Main Parameters**

| 钢种<br>Type of steel | 脱碳层 mm<br>Decarburized depth | 硬度 HBW<br>Hardness | 直线度 mm/M<br>Straightness | 扭转度 mm/M<br>Torsion degree | 表面缺陷深度 mm<br>Surface defect depth |
|---------------------|------------------------------|--------------------|--------------------------|----------------------------|-----------------------------------|
| 滑块<br>Linear slide  | <0.20                        | 180 - 240          | ≤0.3                     | ≤0.3                       | ≤0.1                              |
| 模组<br>Module        | <0.20                        | 190 - 250          |                          |                            |                                   |

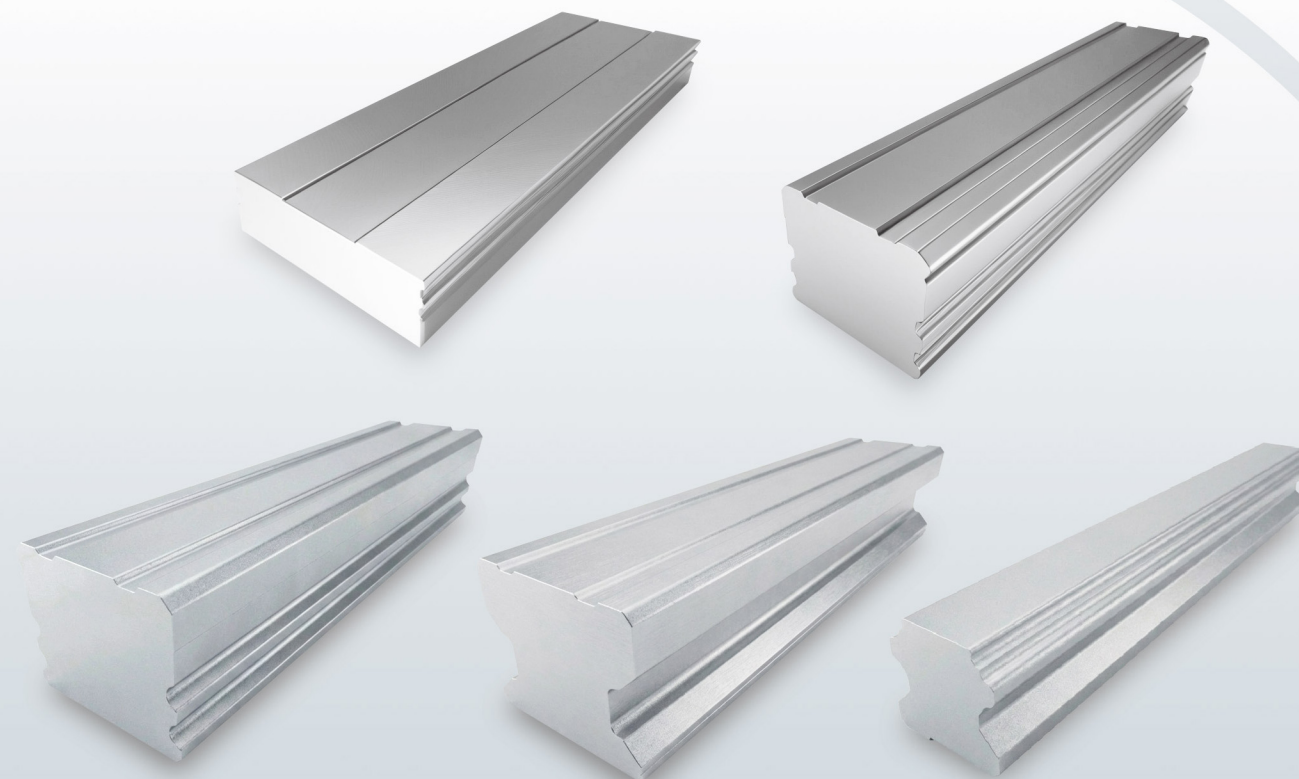
**产品钢种及牌号**

**Steel grade and designation**

| 钢号 Type of steel   | GB  | EN ISO           | ASTM | JIS    |
|--------------------|---|------------------|------|--------|
| 滑块<br>Linear slide | 20CrMoA                                     | 18CrMo4 (1.7243) | 4118 | SCM420 |
| 模组<br>Module       | 55  | C55 (1.0535)     | 1055 | S55C   |
| 其它<br>Others       | 16MnCr5、20CrMoH、20MoCr3 (1.7320)、SCM420H... |                  |      |        |

● **Cold-drawn Linear Guide Steel**

直线导轨冷拉型钢



产品规格: 15型~85型

应用领域: 数控机床、自动化设备、机器人设备、精密仪器等领域。

Specifications: Model 15 - 85

Applications: CNC machine tools, automation equipment, robotic systems, precision instruments, and other related fields.

**产品主要参数**

**Main Parameters**

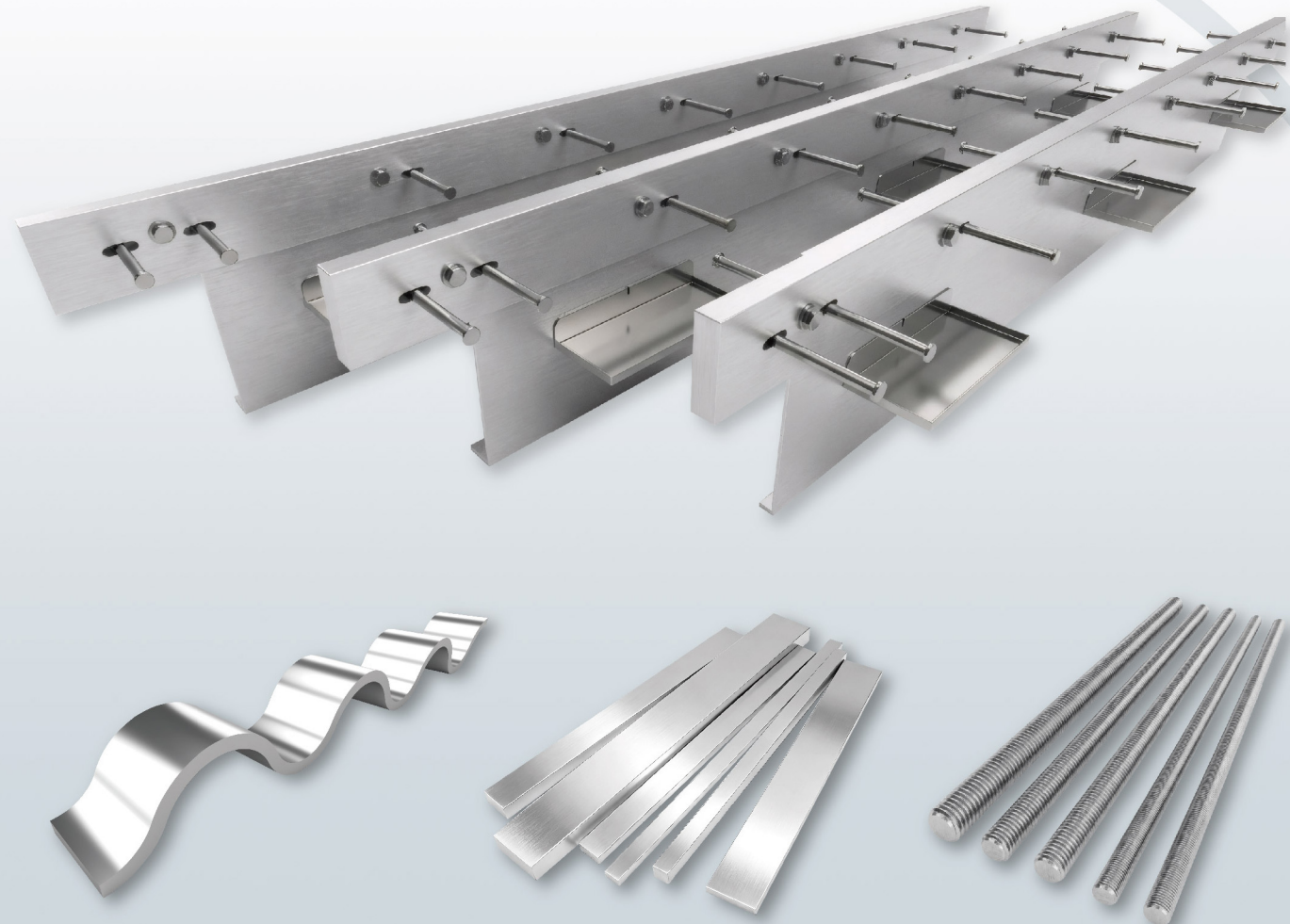
| 钢种<br>Type of steel  | 球化率级 /%<br>Spheroidization rating | 脱碳层 mm<br>Decarburized depth | 硬度 HBW<br>Hardness | 直线度 mm/M<br>Straightness | 扭转度 mm/M<br>Torsion degree | 表面缺陷深度 mm<br>Surface defect depth |
|----------------------|-----------------------------------|------------------------------|--------------------|--------------------------|----------------------------|-----------------------------------|
| 轴承钢<br>Bearing steel | 2-4级 (GB)                         | <0.10                        | 190-255            | ≤0.25                    | ≤0.3                       | ≤0.1                              |
| 碳素钢<br>Carbon steel  | ≥85%                              | <0.10                        | 180-235            |                          |                            |                                   |

**产品钢种及牌号**

**Steel grade and designation**

| 钢号 Type of steel     | GB    | EN ISO       | ASTM   | JIS  |
|----------------------|-------|--------------|--------|------|
| 轴承钢<br>Bearing steel | GCr15 | 100Cr6       | E52100 | SUJ2 |
| 碳素钢<br>Carbon steel  | 55    | C55 (1.0535) | 1055   | S55C |

● **Steel for Building Floors & High-Strength Bolt**  
建筑地坪用钢及高强度螺杆



应用领域: 集成建筑与装配工程、重型工业与工程机械、现代物流与商业空间等领域  
Application: Serving the Fields of Integrated Building & Assembly Engineering, Heavy Industry & Engineering Machinery, and Modern Logistics & Commercial Spaces.

地坪钢甲缝用钢 Steel for Building Floors

| 钢号<br>Steel Grade | 规格 mm<br>Specifications | 精度级别<br>Accuracy Grade | 长度 mm<br>Length     | 长度公差 mm<br>Length Tolerance |
|-------------------|-------------------------|------------------------|---------------------|-----------------------------|
| S235JR            | 10*40                   | h11                    | 3000                | +0/-1                       |
| S235JR            | 6*42                    | h11                    | 按要求<br>As requested | +0/-1                       |

高强度螺栓产品 High-Strength Bolt

| 型号 Model             | M60 | M52 | M45 | M39 | M36 | M30 |
|----------------------|-----|-----|-----|-----|-----|-----|
| 公差等级 Tolerance Grade | 8g  | 8g  | 8g  | 8g  | 8g  | 8g  |
| 齿宽 Face Width        | 5.5 | 5   | 4.5 | 4   | 4   | 3.5 |

● **Customized Products**  
定制产品

